



Deaverview Mountain

Presented by

Allison Dains, Parks & Recreations Director

Board of County Commissioners Meeting

April 18, 2023



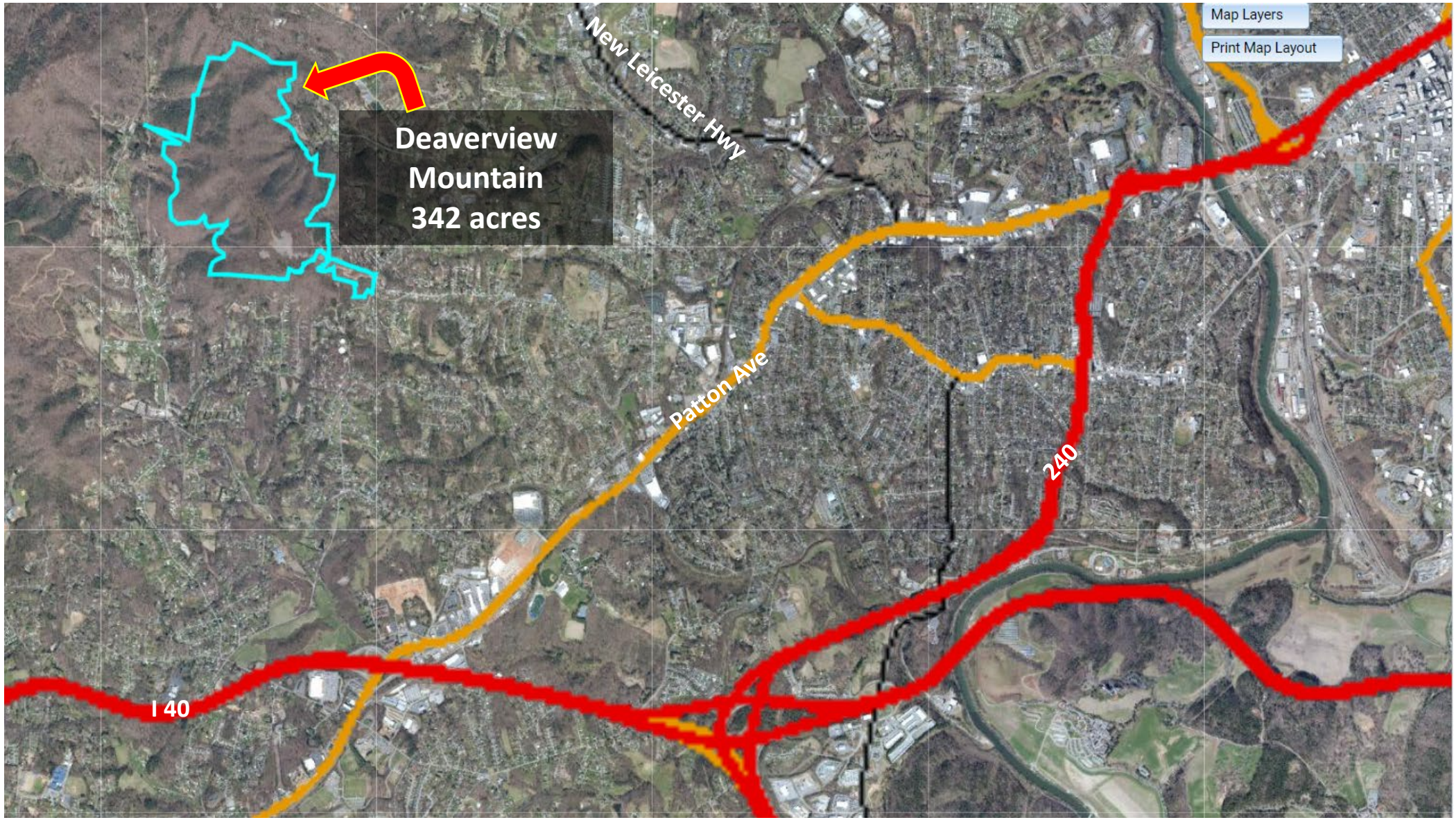
Deaverview Mountain Property

Property is located in the Deaverview
Community



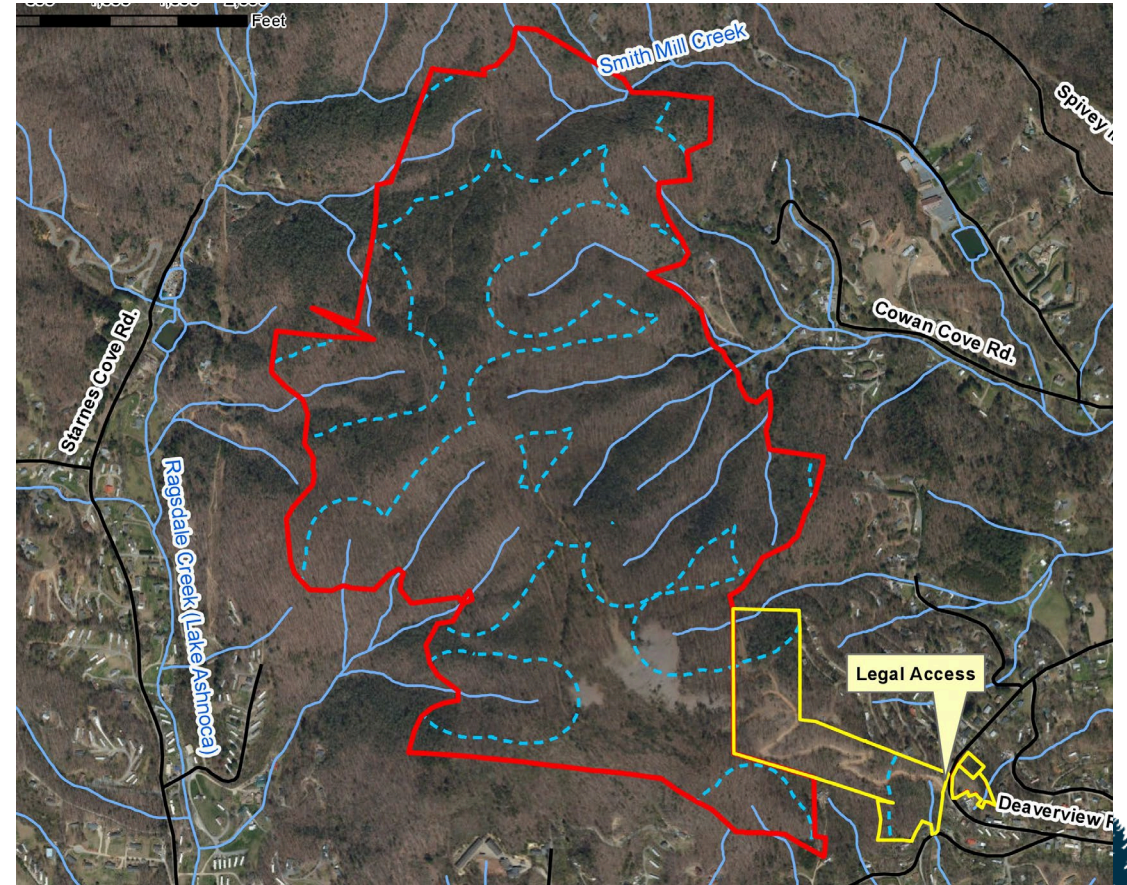
- 5.2 miles from Downtown Asheville
- 3.6 miles from West Asheville
- 7.5 miles from Leicester
- 7.9 miles from Candler





Property Status

- **Ownership**
 - Privately owned by conservation-minded individual as of March
 - SAHC (Southern Appalachian Highlands Conservancy) – 3 year option to secure needed funds for County donation of property
- **Funding Status**
 - Potential Land and Water Grant Funding: \$4,369,630
 - Additional Funding Needed: \$4,510,000
 - Total Project Cost: \$8,879,630

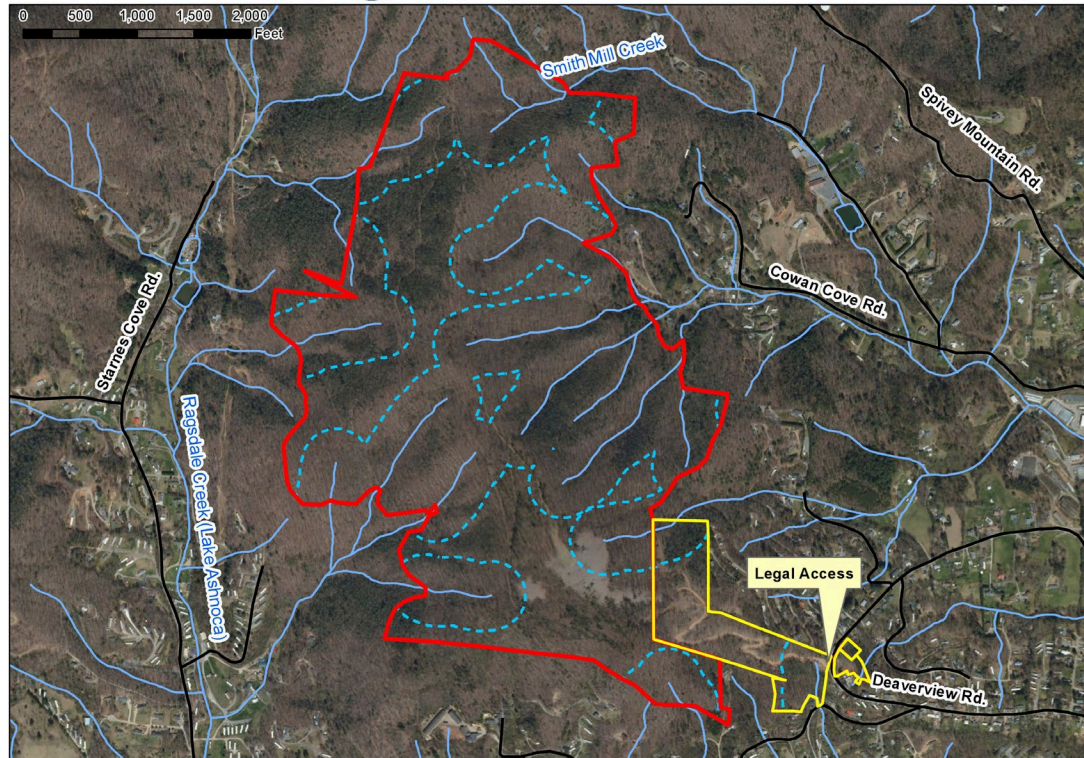


Allowances in the NCLWF Conservation Easement

2023 Deaverview Mountain Tract
Southern Appalachian
Highlands Conservancy



■ NCLWF Conservation Easement
■ NCLWF DCR Match Area
— Streams
- - - 300' Buffer
— Roads



- Multimodal unpaved trail development
- Parking lot
- Restrooms
- Storage shed
- Covered picnic shelters
- Observation/viewing platforms
- Educational kiosk
- Maintenance of trails and viewsheds



Expected Timing

- **Expected SAHC ownership & County Donation:** Early 2026
- **Expected Start for Improvements:** 2027 (earliest estimate)



Requested Board Action

Approve Resolution:

- That the Buncombe County Board of Commissioners has the intent to explore creating a county park or preserve for passive recreation and educational opportunities for our community
- Staff has the direction and ability to partner with Southern Appalachian Highlands Conservancy on seeking state and federal funding
- Staff may proceed with any due diligence required for the establishment of the property as a park or preserve.

